

VOTE BY MAIL

The last days to request a
vote-by-mail ballot in the 2008
statewide elections are:

JANUARY 29

for the February 5 Presidential Primary Election

MAY 27

for the June 3 Direct Primary Election

OCTOBER 28

for the November 4 General Election

Any registered voter can vote by mail in California. To vote by mail, you must apply to your county elections office for a vote-by-mail ballot at least seven days before Election Day to be eligible to vote by mail in that election. Use the form on the sample ballot booklet you receive in the mail a few weeks before Election Day to apply for a vote-by-mail ballot, or send your request in writing to your county elections office.

You may return your voted ballot by mail, or hand-deliver it to your county elections office or any polling place in your county. In any case, your vote-by-mail ballot must be received by elections officials before the polls close at 8:00 p.m. on Election Day.

IT'S YOUR VOICE. IT'S YOUR CHOICE.

VOTE IN 2008!



The Secretary of State provides voter assistance in seven languages:

English: 1-800-345-VOTE (8683)

中文 /Chinese: 1-800-339-2857

日本語 /Japanese: 1-800-339-2865

한국어 /Korean: 1-866-575-1558

Español/Spanish: 1-800-232-VOTA (8682)

Tagalog/Tagalog: 1-800-339-2957

Việt ngữ /Vietnamese: 1-800-339-8163



Debra Bowen

California Secretary of State

www.sos.ca.gov

OSP 08 107653

MY VOICE. MY CHOICE.
MYVOTE

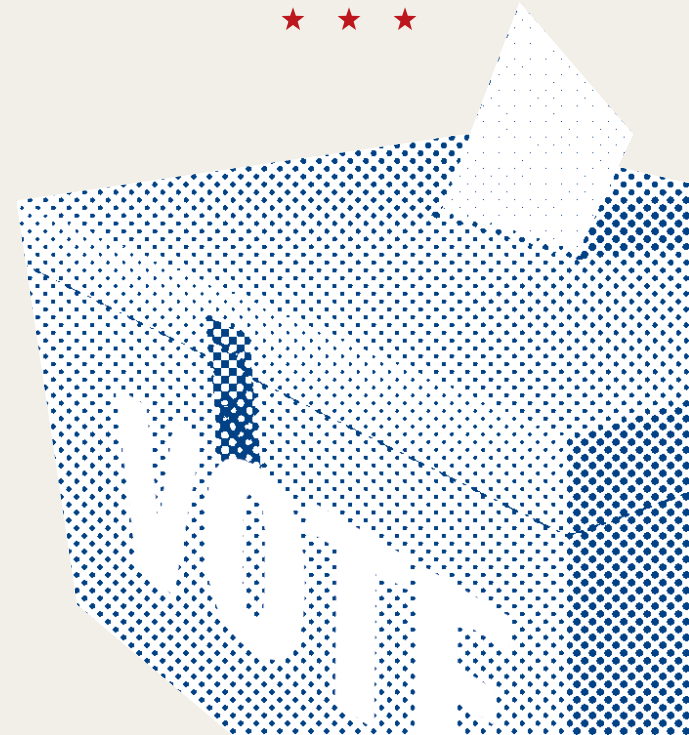
2008 CALIFORNIA STATEWIDE ELECTIONS

PRESIDENTIAL PRIMARY • FEBRUARY 5

DIRECT PRIMARY • JUNE 3

GENERAL • NOVEMBER 4

POLLS ARE OPEN FROM
7:00 A.M. TO 8:00 P.M. ON ELECTION DAY



REGISTER TO VOTE

The last days to register to vote
in the 2008 statewide elections are:

JANUARY 22 for the February 5 Presidential Primary Election

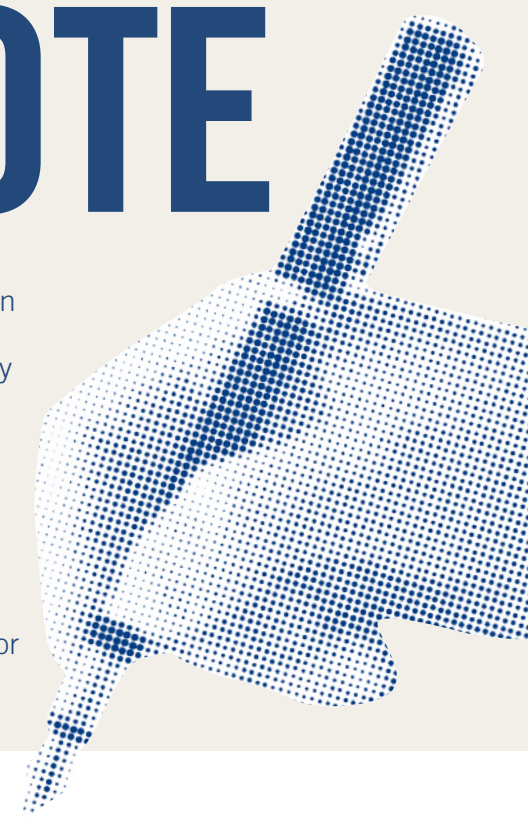
MAY 19 for the June 3 Direct Primary Election

OCTOBER 20 for the November 4 General Election

Registering to vote is simple and free. You can get a registration form online at www.sos.ca.gov. They are also available at most post offices, libraries, city and county offices, and the Secretary of State's office.

To register to vote you must be a U.S. citizen, a California resident, at least 18 years of age on Election Day, and not in prison or on parole for the conviction of a felony.

To request a voter registration form or to find out if you are registered to vote, call your county elections office or the Secretary of State's toll-free Voter Hotline at **1-800-345-VOTE**, or visit www.sos.ca.gov.



WHERE TO VOTE

Your polling place location might change between elections. Be sure to check the back of your county sample ballot for the location of your polling place. You can also get this information by calling your county elections office or the Secretary of State's toll-free Voter Hotline at **1-800-345-VOTE**, or visiting www.sos.ca.gov.

ELECTION RESULTS

Want to know who won on Election Day? Get up-to-the-minute results of state contests at www.sos.ca.gov.

ELECTION INFO FROM A TO Z

Registered voters will automatically receive the Secretary of State's Official Voter Information Guide in the mail a few weeks before Election Day. This nonpartisan guide has details on ballot measures and some candidates, including text of proposed laws, statements from supporters and opponents of ballot measures, impartial analyses of the proposed laws and potential costs to taxpayers, and other useful election information.

Registered voters also will receive sample ballots in the mail from their county elections offices. Your sample ballot will

include information on local candidates and measures, if there are any, as well as the location of your polling place and an application for a vote-by-mail ballot.

For more information about how and where to vote, as well as other ways you can participate in the electoral process or get free copies of anything mentioned in this pamphlet, call the Secretary of State's toll-free Voter Hotline at **1-800-345-VOTE** or visit www.sos.ca.gov.